

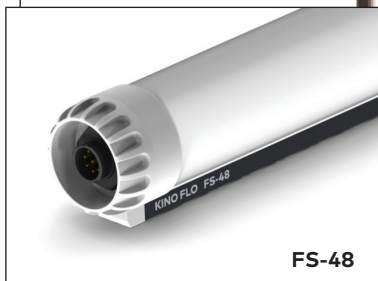
---

# Quick Start Guide

## FreeStyle 4 LED



CFX-F484



FS-48



LED-140X



**KINO FLO**  
Lighting Systems

# FreeStyle 4 System



## **SYS-F484U**

FreeStyle T44 LED DMX System, Univ

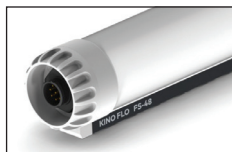
### **FreeStyle 4 LED System consists of:**

- 1 FreeStyle 4 Fixture
- 1 Mounting Plate
- 1 Extension Cable
- 1 LED Controller
- 4 FreeStyle 4ft LED Tubes

## FreeStyle 4 System Components



**CFX-F484** FreeStyle T44 Fixture



**FS-48** FreeStyle 4ft LED Tube



**MTP-KG41** KinoGrip 41K Mount w/ 3/8" Pin (10mm)



**X12-25** FreeStyle Extension, 25ft



**LED-140X-120U**  
FreeStyle 140 LED DMX Controller, Univ 120U

**LED-140X-230U**  
FreeStyle 140 LED DMX Controller, Univ 230U

# Power



## AC Input

The FreeStyle 140 LED DMX Controller is powered AC and includes an IEC connection. It also includes a 12ft power cord with a locking IEC connector.

The FreeStyle 140 LED DMX has a built-in power supply with universal input from 100-240VAC.

## Ambient Operating Temperature

The FreeStyle 140 LED DMX is designed to operate at temperatures from 14°F to 104°F (-10°C to 40°C).



## DC Input

The FreeStyle 140 LED DMX can also be operated on 24VDC (input range 18-36VDC) through a 3-Pin XLR. The pin polarity is:

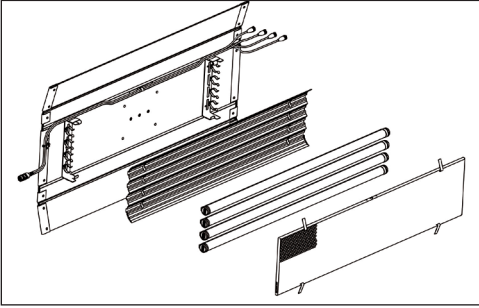
- Pin # 1 – Ground
- Pin # 2 + 18-36VDC
- Pin # 3 not used



## Note:

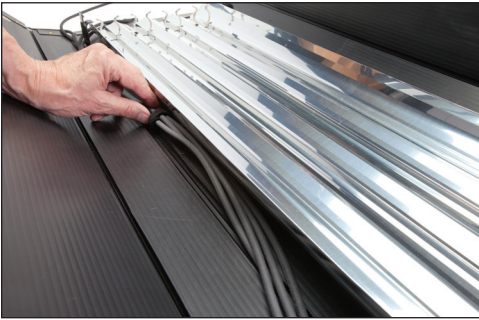
A low voltage warning will display if input DC voltage is under 18VDC. Photo example: **LOW VDC: 16**

# FreeStyle Fixture Assembly



The FreeStyle T44 fixture is comprised of a Louver, Reflector and Tube Harness.

The Louver and Reflector are held in place with Velcro fasteners. The Tube Harness is secured by means of a  $\frac{1}{4}$  turn fastener and Velcro.



**To Release the Tube Harness**  
Remove the harness from the Velcro located under the reflector.



Rotate the  $\frac{1}{4}$  turn fastener clockwise to release harness.

# FreeStyle Harness



## FreeStyle Harness:

Align arrows on harness connector with tube. Push and click into place. To remove harness connector, turn locking ring to the left and pull.



Push tubes into the fixture's tube holder clips. The tubes can operate independent of the fixture allowing them to be built into sets or custom soft boxes or hand-held as a single tube for an eye-light.



The FreeStyle Reflector (**REF-F484**) has a unique design to accommodate the aluminum channel on the back of the FreeStyle tube. It provides even light distribution and maximizes light output. In addition, it acts as a heatsink and allows the FreeStyle Tubes to run cooler.

# Mounting the Fixture



The standard mount (**MTP-KG41**) comes with a 3/8" Lollipop that clamps into a grip head. The ball and socket mount allows the fixture to be oriented in a broad range of angles.



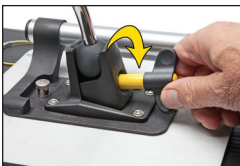
Align the center pin of the mounting plate to the center hole on the mating plate.

Rotate plate clockwise until the four shoulder rivets drop into the receptacle. A locking pin will snap into place when the plate is properly seated.

The **yellow wire loops** provide attachment points for a safety chain.



**To remove the plate**, pull up on the locking pin and reverse the mounting procedure.



Turn the knob to loosen or tighten the mount.



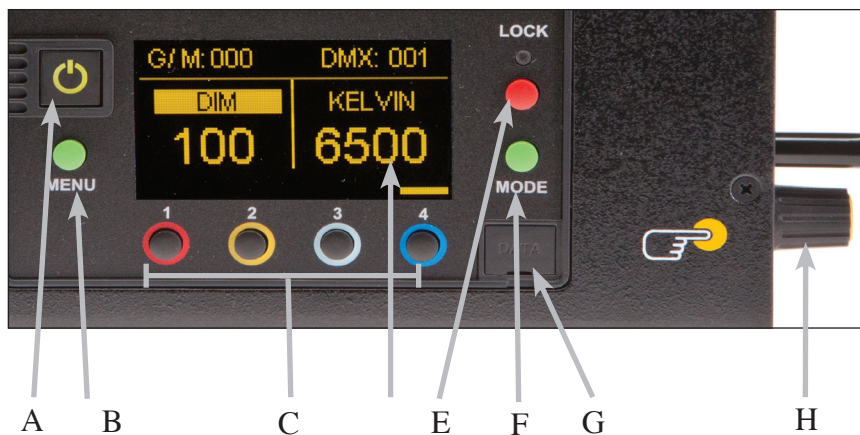
Lollipops are interchangeable.

**MTP-L** Kino 41 Lollipop w/ 3/8" Pin (10mm)

**MTP-LBC** Kino 41 Lollipop w/ Baby Rcvr Curve (16mm)

**MTP-LBS** Kino 41 Lollipop w/ Baby Rcvr Short (16mm)

# Control Panel - White Mode



**A) On /Off:** **On** = Green light displayed. **Off** = Red light displayed. The display and all menu settings can be operated while the power button is in the Off position, as long as power is applied to the controller. The On /Off button only controls the light source.

**B) Menu:** Provides access to menu options such as General settings, Reset, DMX and DMX Wireless settings. Shortcut: While on control screen, press and hold for 3 seconds to switch through menus (**White, Gels & Hue, RGB, FX**).

**C) Preset Buttons:** Factory defaults left to right are: 2700K, 3200K, 5000K and 6500K. G/M default value is 000. User can also use these preset buttons to store custom Kelvin and G/M settings.

**D) Display:** Provides access to Dim, Kelvin, G/M, and DMX channel.  
Factory reset will show: Dim = 10%, Kelvin = 2700K, G/M = 000, DMX = 001.

**E) Lock:** Press the **Lock** button to disable all buttons and Control knob.  
Press for 3 seconds to restore displayed presets to default factory settings.

**F) Mode:** Press to navigate from Dim to Kelvin and G/M settings.  
When in sub-menus, pressing Mode always returns you to main display.  
When DMX is applied, use Mode to access DMX channel on main display.  
Shortcut: Long press will bring you back one step.

**G) Data Port:** Mini B USB for firmware updates.

**H) Control Knob:** Manually adjusts Dim, Kelvin, G/M levels and DMX address.  
Press the Control knob to toggle between **Fine** and **Coarse** increments or when selecting options within menus.

**DMX Note:** The LED-140X has an **"AUTO TERMINATE"** feature.  
The last fixture that does not have an XLR cable attached to the DMX "Out" port will automatically terminate.



# Control Panel - Gels/Hue Mode



## Gels/Hue Mode

### A) Menu:

Provides access to menu options such as General settings (**Gels/Hue Mode**), Reset, DMX and DMX Wireless settings. Shortcut: While on control screen, press and hold for 3 seconds to switch through menus (**White, Gels & Hue, RGB, FX**).

### B) Preset Buttons:

Factory defaults left to right are: 2700K, 3200K, 5000K and 6500K. G/M default value is 000. User can also use these preset buttons to store custom Kelvin between 2500K and 9900K and custom G/M, Gel, Hue and Saturation settings.

### C) Display:

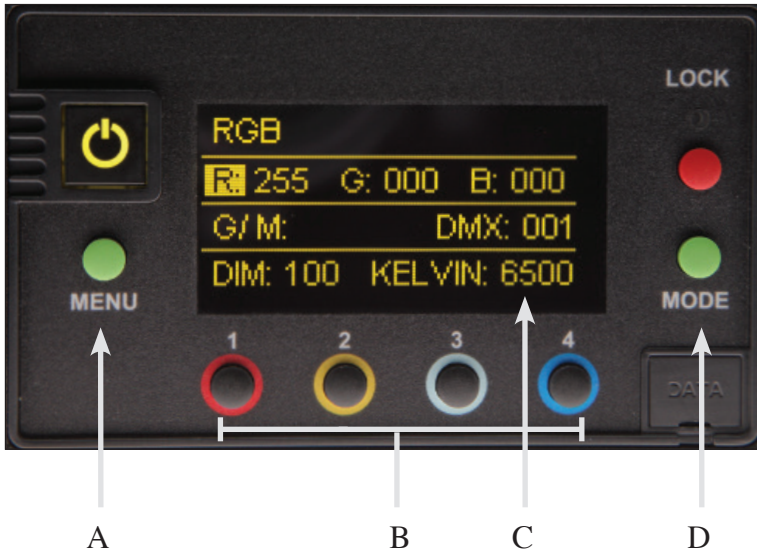
Provides access to Dim, Kelvin, G/M, Gel, Hue/Saturation and DMX channel. Factory reset will show: Dim = 10%, Kelvin = 2700K, G/M = 000, DMX = 001.

### D) Mode:

Press to navigate from Dim to Kelvin, G/M, Gel, Hue and Saturation settings. When on the Gel function, pushing the Control knob in/out will apply the gel or remove the gel. When in sub-menus, pressing Mode always returns you to main display. When DMX is applied, use Mode to access DMX channel on main display. Shortcut Tip: Long press will bring you back one step.



# Control Panel - RGB Mode



## RGB Mode

### A) Menu:

Provides access to menu options such as General settings (**RGB Mode**), Reset, DMX and DMX Wireless settings. Shortcut: While on control screen, press and hold for 3 seconds to switch through menus (**White, Gels & Hue, RGB, FX**).

### B) Preset Buttons:

Factory defaults left to right are: 2700K, 3200K, 5000K and 6500K. G/M default value is 000. User can also use these preset buttons to store custom Kelvin between 2500K and 9900K and custom G/M, and RGB settings.

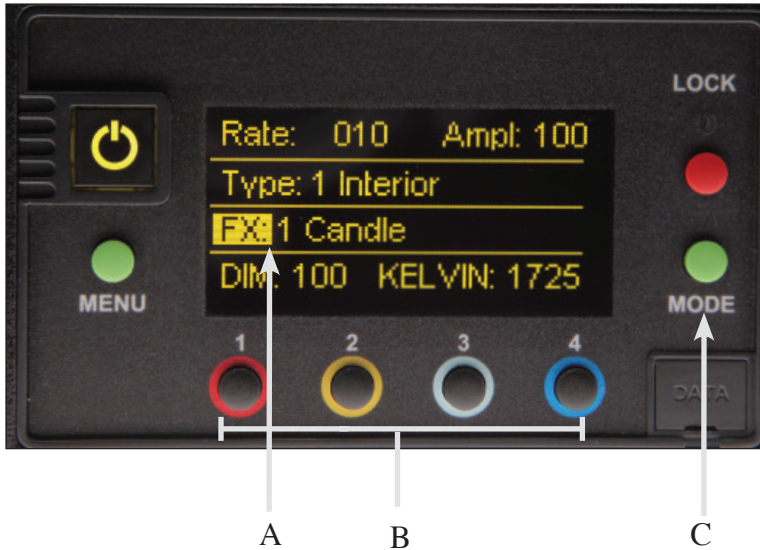
### C) Display:

Provides access to Dim, Kelvin, G/M, RGB and DMX channel. Factory reset will show: Dim = 10%, Kelvin = 2700K, G/M = 000, DMX = 001.

### D) Mode:

Press to navigate from Dim to Kelvin, G/M, RGB settings. When in sub-menus, pressing Mode always returns you to main display. When DMX is applied, use Mode to access DMX channel on main display. Shortcut: Long press will bring you back one step.

# Control Panel - FX (Effects)



## FX (Effects) Mode

FX mode provides access to effects including Candle, Fire, TV, Police, Lightning, Paparazzi, Pulse and Scroll. Candle mode used as an example:

### A) FX Option:

Choose the desired FX Mode by rotating the control knob. When on the desired effect, there will be several pre-programmed effects as well as control parameters that can be altered.

### B) Preset Buttons:

In FX Mode, **Kelvin** custom settings and any control functions displayed such as **Rate** and **Amplitude (Ampl)** can be saved as a preset. Chosen values can be assigned to any preset button by holding down the desired button for 3 seconds. The Kelvin display will flash once the setting is registered.

To restore presets to default factory settings, choose **Reset** under **General** settings and **Clear Presets**. This method will reset all buttons in all Modes. Shortcut: If only want to clear presets for **Candle** Mode, hold **Lock** button for 3 seconds while Candle mode is displayed.

### C) Mode:

Press to navigate from Dim to Kelvin and FX settings.  
Shortcut: Long press will bring you back one step.

# Fixture Specifications



**FreeStyle T44**

**CFX-F484** FreeStyle T44 LED Fixture

**Weight w/ Tubes:** 12.5 lb (6kg)

**Dimensions:** 52 x 13 x 3.5" w/ 6.5" barndoors  
(132 x 33 x 9cm w/ 16.5cm barndoors)

# LED Controller Specifications



**FreeStyle 140 LED  
DMX Controller**

**LED-140X** FreeStyle 140 LED DMX Controller

**AC Input Voltage:** 100~240VAC 50/60Hz, 150W

**Amperage VAC:** 1.25A at 120VAC, 0.65A at 230VAC

**DC Input Voltage:** 18-36VDC, 150W

**Amperage VDC:** 6.25A at 24VDC

**Kelvin Range:** 2700K~6500K (White Mode)

**Kelvin Range:** 2500K~9900K (Color Mode)

**Dimming Range:** 100%~1%

**Weight:** 4.5 lb (2kg)

**Dimensions:** 9.5 x 4.5 x 3"  
(38 x 11.5 x 8cm)

**FCC Part 15 Verification:**

This device complies with Part 15 of the FCC Rules. Operation is subject to the condition that this device does not cause harmful interference.

**FCC Part 15 Declaration of Conformity:**

This device complies with Part 15 of the FCC Rules. Operation is subject to the following two conditions: (1) this device may not cause harmful interference, and (2) this device must accept any interference received, including interference that may cause undesired operation.



KINO FLO, INC  
**FreeStyle 4 & LED-140X**  
ID: XRSCRMXTIMO101  
IC: 8879A-CRMXT101

For full operation manual, latest Warranty information and Certifications,  
see Kino Flo website at [www.kinoflo.com](http://www.kinoflo.com).



**Environmental: Disposal of Old Electrical & Electronic Equipment.**



This symbol on the product or on its packaging indicates that this product shall not be treated as household waste. This product is made of recyclable materials and should be disposed of in accordance with governmental regulations.

---

Kino Flo, Inc. 2840 N. Hollywood Way, Burbank, CA 91505, USA  
Tel: 818 767-6528 website: [www.kinoflo.com](http://www.kinoflo.com)