

18.4" PORTABLE PRODUCTION MONITOR

1000 NITS



8K

12G-SDI / HDMI 2.1



1000 Nits



BT.2020 Color Space



3840x2160



Quad-Split



Rugged Suitcase

MODEL NO. **UQ19**

SUNLIGHT READABLE SCREEN

The 1000 nits high brightness screen not only provides director with accurately colors outdoors, but also combines with the HDR algorithm to deliver an unparalleled quality picture that plays an important role in post-production.



HDR supports both HLG and PQ (ST2084 300/1000/10000).

1000 NITS





A+ PRECISE COLOR EXPRESSION

A good quality A+ grade screen with color depth of 1.07B is carefully selected one in a hundred, so that every detail cannot be missed through accurately reproducing the rich colors of reality.

Accurate Color Calibration

The color spaces are calibrated by a precision calibrator, so the color space can be switched between BT.709, BT.2020, DCI-P3 and NTSC.

99% DCI-P3 | 78% BT.2020



Built-in 3D-LUT, featuring 17 default logs and 6 user logs.

8K 12G-SDI, HDMI VIDEO SIGNAL

Combine four 4K 60Hz video signals into one 8K 60Hz video signal using a quad-link 12G-SDI connection.



4x12G-SDI | Single-link & Quad-link

Supports ST2082-10 and ST2082-12, the 12G-SDI quad-link generate video signal up to 8K 60Hz.



12G SFP+ Fiber Optic Video

Supports 12G SFP+ fiber optic video signal, transmits up to 4K 60Hz.



HDMI 2.1 Input And Loop Output

Supports HDMI 2.1 video signal input and loop output, up to 8K 60Hz.

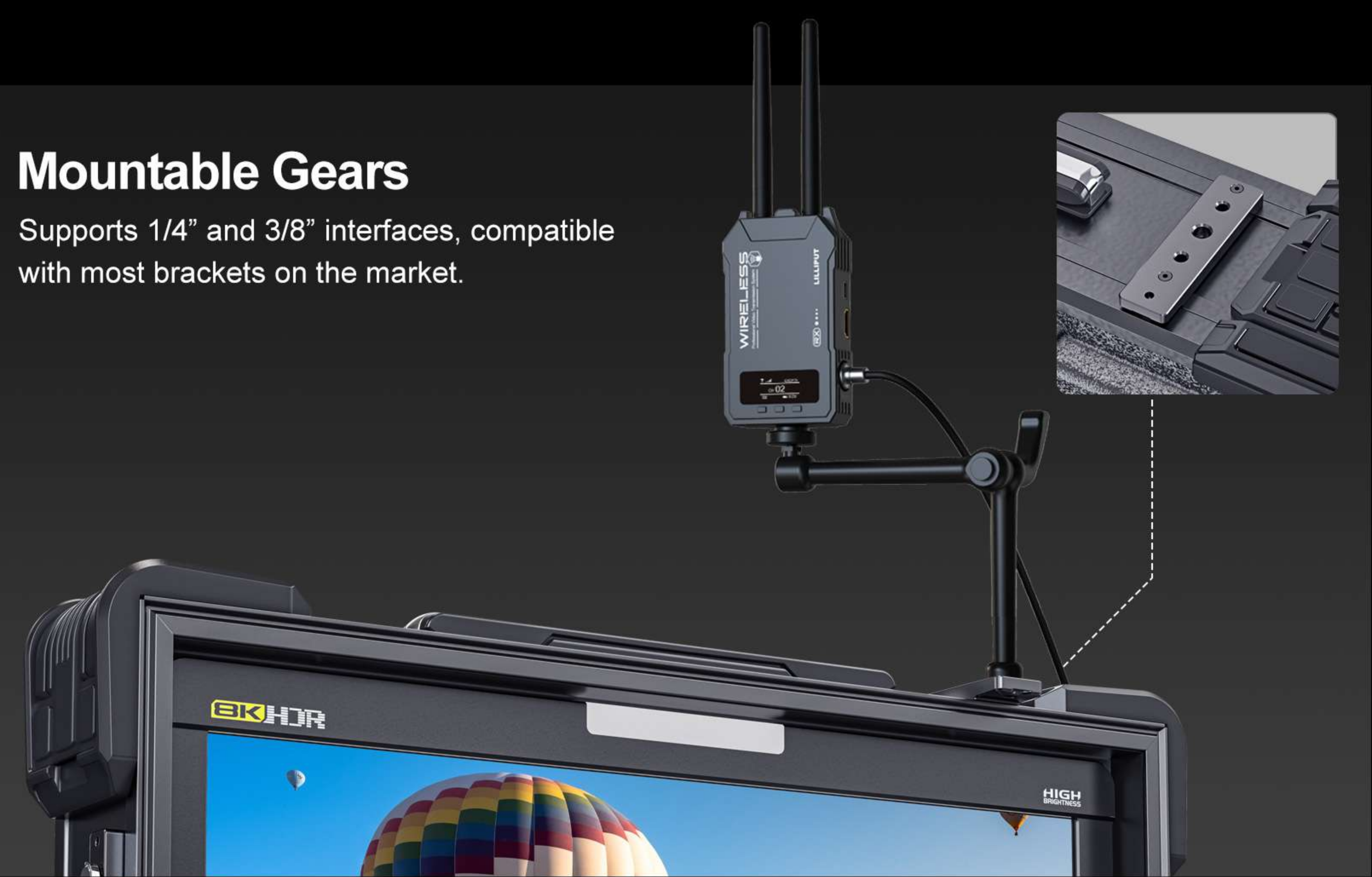


RUGGED PORTABLE SUITCASE

A rugged suitcase with fully upgraded protection that is super resistant to drop and shock. It also has a wealth of functionality, making it both practical and durable at the same time.

Mountable Gears

Supports 1/4" and 3/8" interfaces, compatible with most brackets on the market.



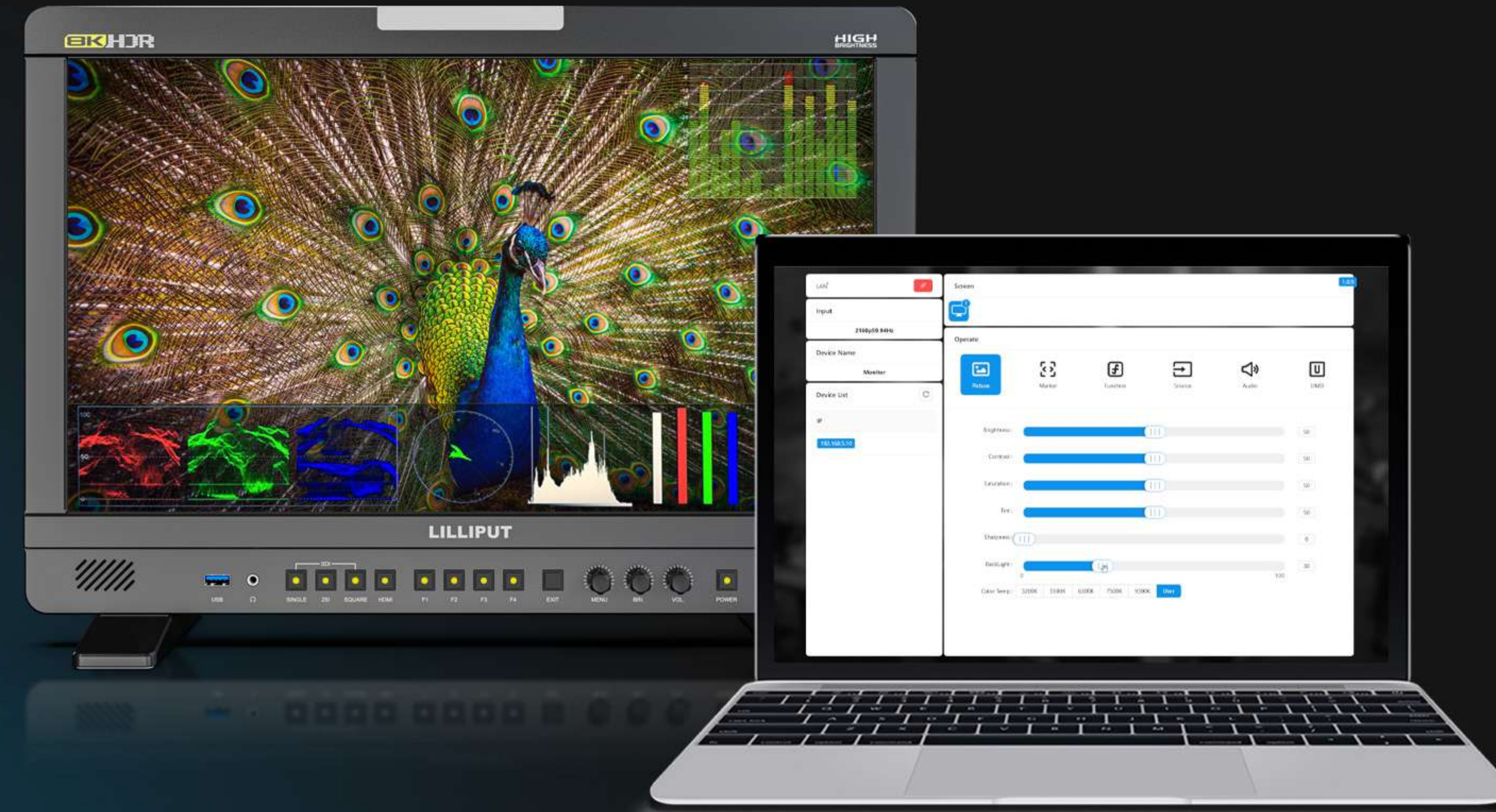
Patented Creative Sunshade

Folding sunshade prevents stray light from hitting the screen and interfering with vision.



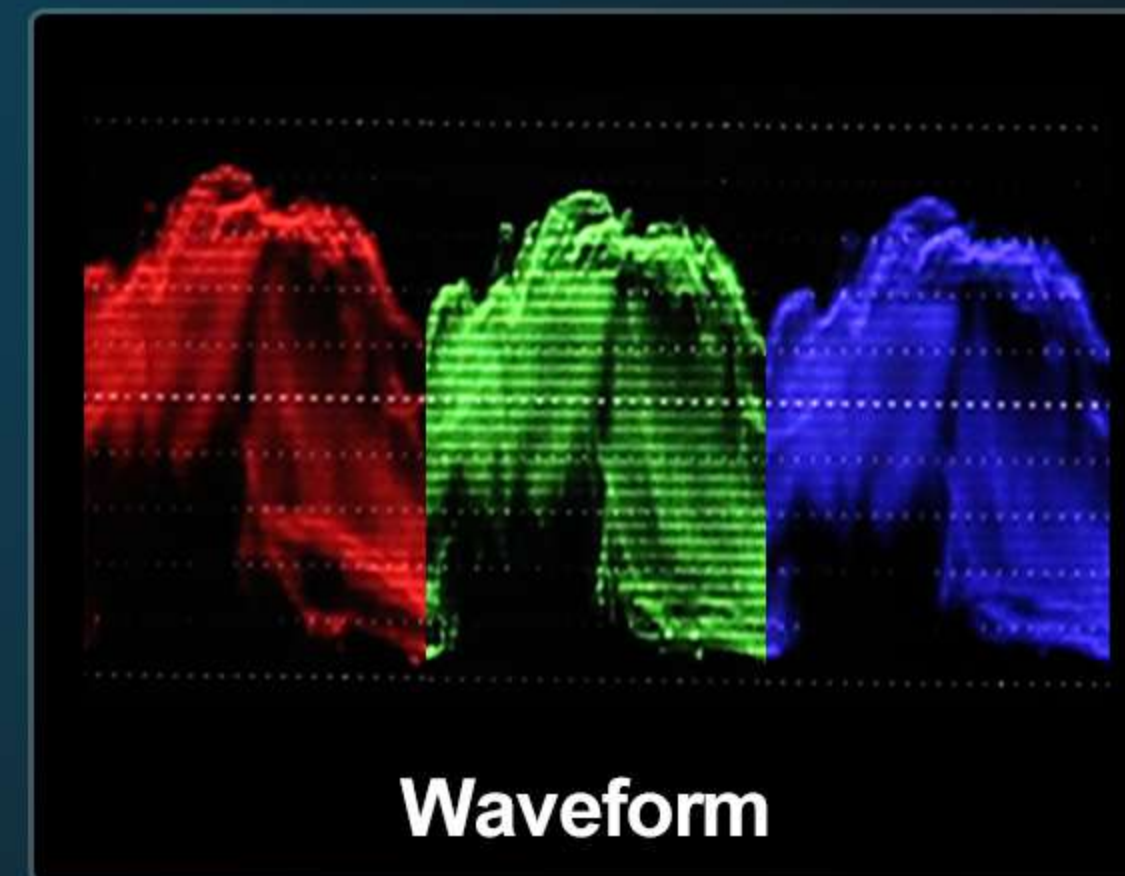
LAN / RS422

Select an appropriate port from LAN or RS422 to connect to the user's operating interface, allowing the application to identify the monitor before control.

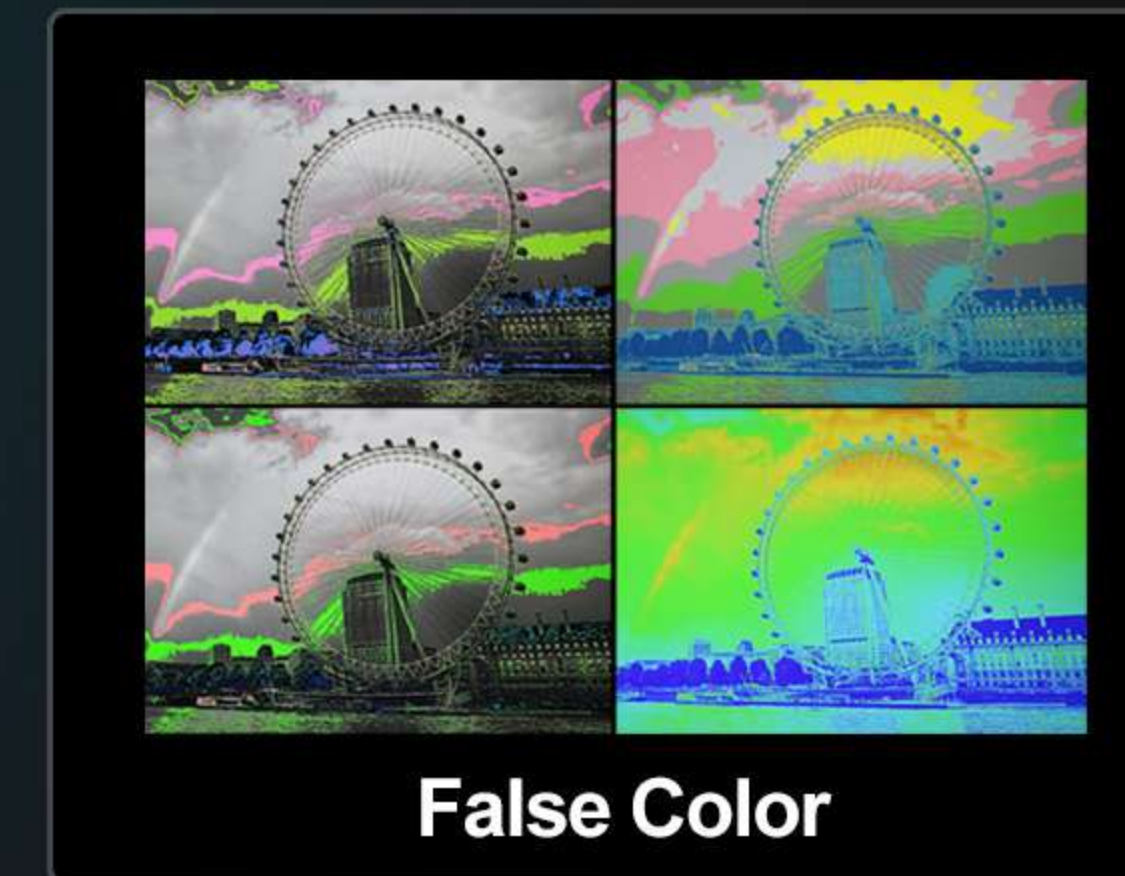


REMOTE CONTROL APPLICATION

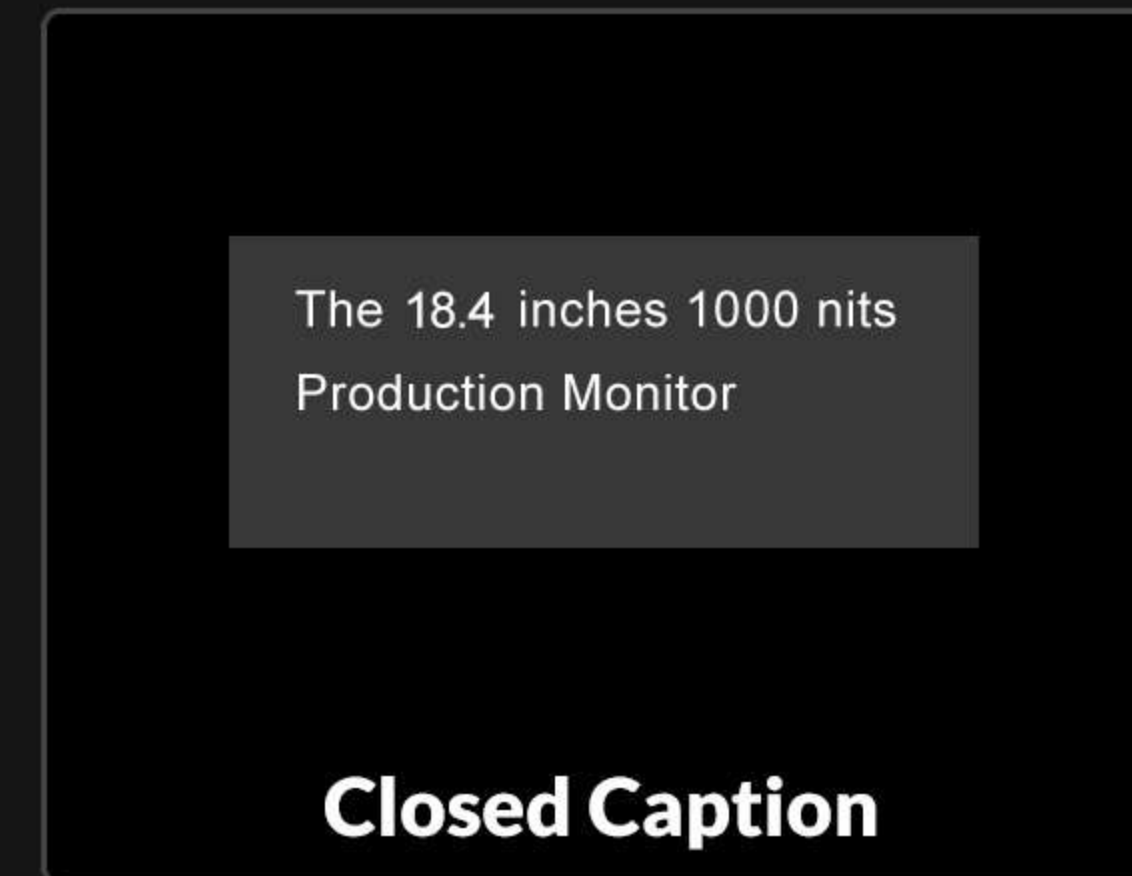
Connect your computer to control the monitor via application. The interfaces of RS422 In and RS422 Out can realize synchronization control of multiple monitors.



Waveform



False Color



The 18.4 inches 1000 nits
Production Monitor

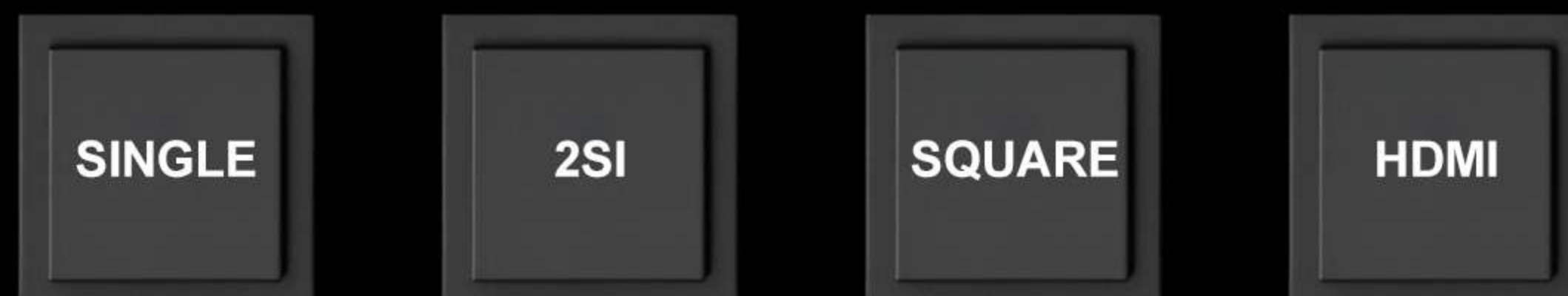
Closed Caption

- Quad-Split
- Color Temp
- Color Space
- 3D-LUT
- HDR
- Gamma
- Closed Caption
- UMD
- Time code
- Remote
- Vector scope
- Waveform
- Audio Vector
- Level meter
- Histogram
- Exposure
- Peaking
- False color
- Check field
- Color bar
- Pixel zoom
- Pix to pix
- Marker
- Freeze
- H/V Delay



QUAD-SPLIT MULTIVIEW

In quad-split multiview mode, any input signal can be selected and changed among 12G-SDI, HDMI 2.1 and 12G-SFP+. Moreover, the images can be differentiated with colorful borders to enhance the senses of monitoring.



When the quad-split multiview function is turned on, there are four buttons that will turn into signal switching function, and each button corresponds to one image respectively. The photographer can quickly switch between different input signals through these four buttons.

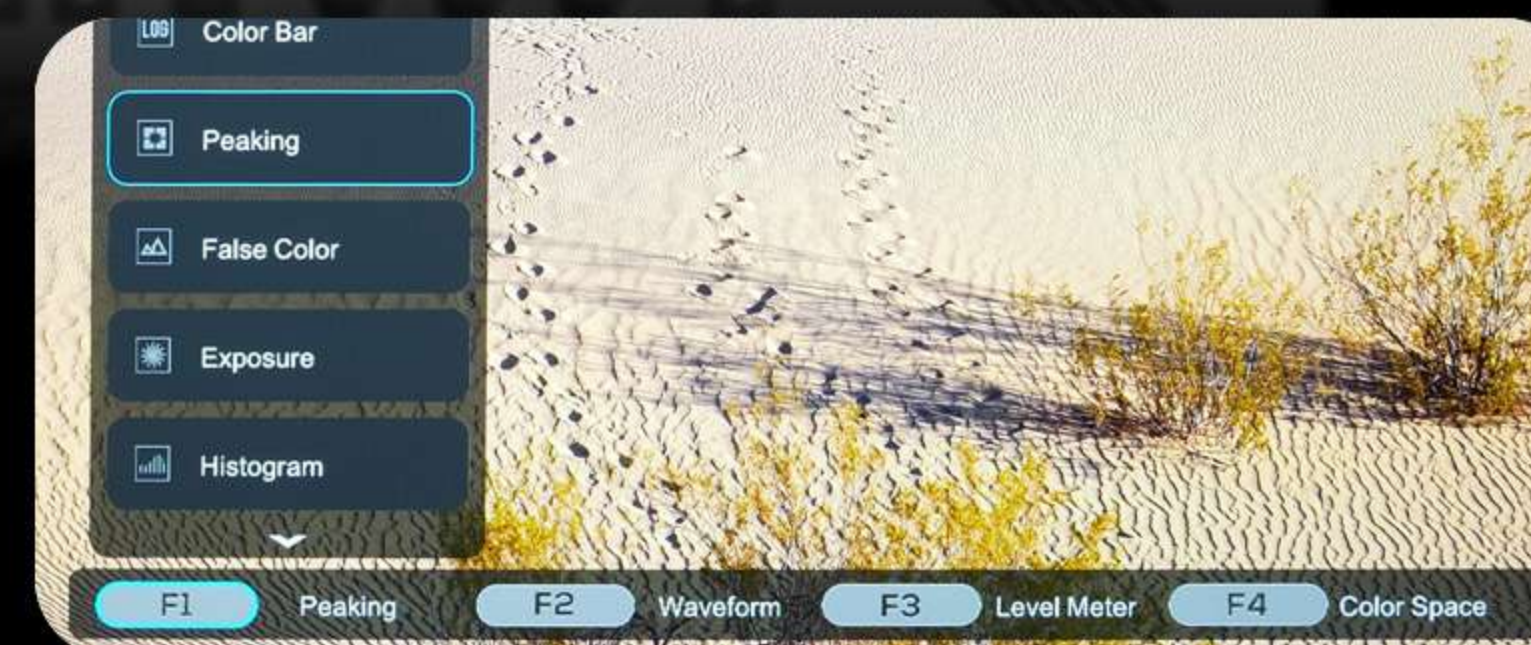
EASY-TO-USE UI

Upgraded UI of monitor brings extreme convenient and practical experience. Moreover, an abundance of shortcut buttons and knobs cover most of monitor functions and settings. User can quickly reach their desired functions.



Main Menu

Main menu with three levels, easy to use.



F1-F4 & Knob Shortcuts

Press F1-F4 to quickly call up functions. Long press F1-F4 or knobs to customise different functions.

OUTDOOR FILMMAKING

A portable production monitor designed for outdoor filmmaking/broadcast live, the 1000 nits of high brightness screen effectively combats sunlight and allows for accurate color reproduction.





VIDEO POST-PRODUCTION

A high brightness 4K monitor with HDR is critical in film and video post-production to ensure accurate color grading, detail precision, and consistency across deliverables. Monitors must also feature advanced video connectivity and support more than 10 bit color depth to prevent banding.



SPECIFICATIONS

DISPLAY	Panel	18.4" 10bit
	Physical Resolution	3840×2160
	Aspect Ratio	16:9
	Brightness	1000cd/m ²
	Contrast	1000:1
	Viewing Angle	170°/ 170°(H/V)
	HDR	ST2084 300/1000/10000/HLG
	Supported Log formats	SLog2 / SLog3 / CLog / NLog / ArriLog / JLog or User...
	Look up table (LUT) support	3D LUT (.cube format)
	Calibration	Calibrate color space to Rec.709, DCI-P3, NTSC, BT.2020
VIDEO INPUT	SDI	4×12G, (Supported 8K-SDI Formats Quad Link)
	SFP	1×12G SFP+(Fiber module for optional)
	HDMI	1×HDMI 2.1 (Supported 8K-HDMI Formats)
VIDEO LOOP OUTPUT	SDI	4×12G, (Supported 8K-SDI Formats Quad Link)
	HDMI	1×HDMI 2.1 (Supported 8K-HDMI Formats)
SUPPORTED FORMATS	SDI	4320p 24/25/30/50/60, 2160p 24/25/30/50/60, 1080p 24/25/30/50/60, 1080pSF 24/25/30, 1080i 50/60...
	SFP	2160p 24/25/30/50/60, 1080p 24/25/30/50/60, 1080pSF 24/25/30, 1080i 50/60, 720p 50/60...
	HDMI	4320p 24/25/30/50/60, 2160p 24/25/30/50/60, 1080p 24/25/30/50/60, 1080pSF 24/25/30, 1080i 50/60...
AUDIO (48kHz PCM Audio)	SDI	16ch 48kHz 24-bit
	HDMI	8ch 24-bit
	Ear Jack	3.5mm
	Built-in Speakers	2
REMOTE CONTROL	RS422	In/out
	GPI	1
	LAN	1
POWER	Input Voltage	DC 15-24V
	Power Consumption	≤56W (15V)
ENVIRONMENT	Operating Temperature	0°C~50°C
	Storage Temperature	-20°C~60°C
OTHER	Dimension(LWD)	452mm×308.3mm×50.5mm / 509.3mm×365.7mm×170mm (with suitcase)
	Weight	4.7kg / 12.1kg (with suitcase)

Note: Due to constant effort to improve products and product features, specifications may change without notice.

STANDARD ACCESSORIES



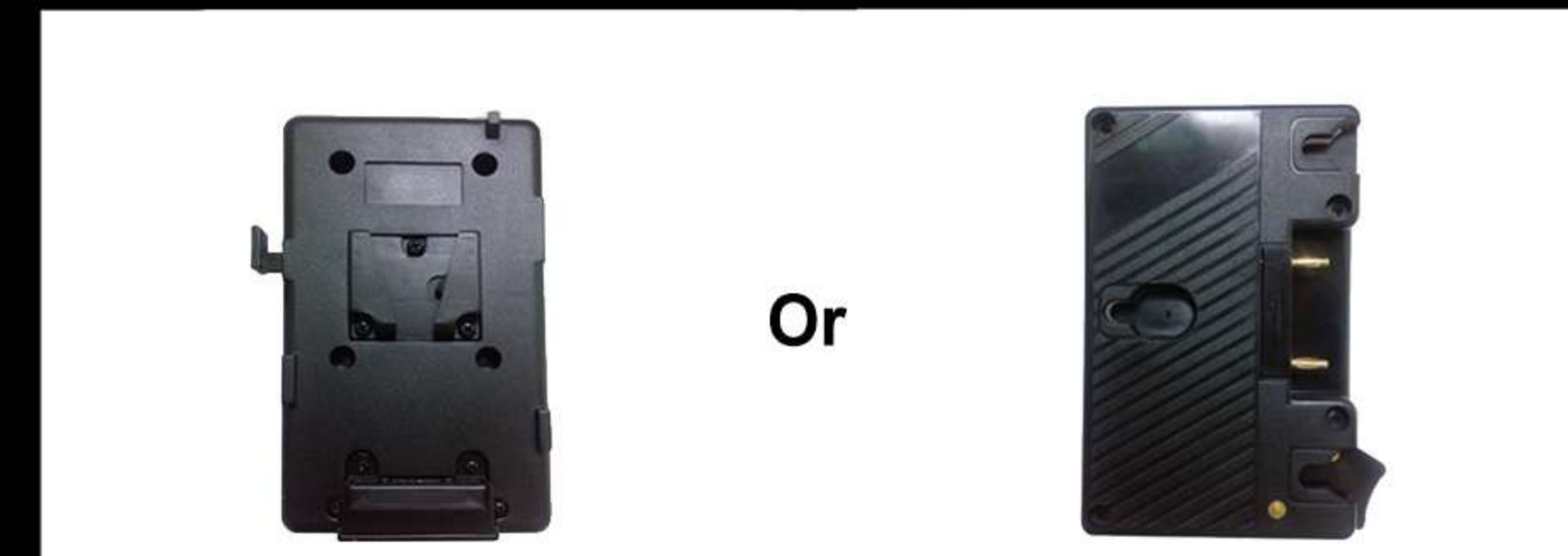
15V 4.8A Power Adapter



Base Brackets



USB Flash Disk



V-Mount Battery Plate Anton Bauer Battery Plate



VESA Mount Plate

OPTIONAL ACCESSORIES



SFP Optical Fiber



Suitcase & Sunshade

