



All 4K Inputs **BM-H215** HD Broadcast Monitor

12G-SDI

4x 3G

HDMI 2.0

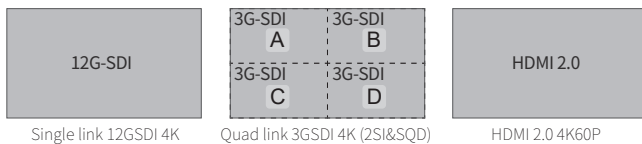
Features

■ 21.5-inch FHD LCD Panel

1920x1080 IPS FHD LCD panel, 8-bit, 16.77M color, 250nits backlight, 1000:1 contrast, H/V 178° viewing angle.

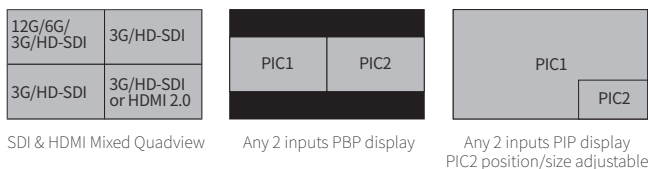
■ All 4K Inputs, Future-proof

Support 12GSDI, Quadlink 4x3GSDI and HDMI2.0 multiple 4K inputs, and pixel-to-pixel zoom-in on the HD panel.



■ Quadview and PBP/PIP view

Support 4x SDI/HDMI mixed multiview and display waveform, vector, audio meters, EOTF, color gamut for each input. Support 2 inputs PBP or PIP display.

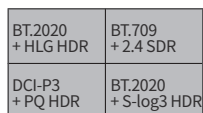


■ HDR/Color Gamut selection, Payload ID auto setting

Gamma 1.0/1.8/2.2/2.4/2.6 or HLG/PQ/Slog3 HDR selection; BT.709, DCI-P3, BT.2020 selection; Payload ID auto set input range, color space, HDR/SDR, color gamut, color depth, etc.

■ Multi Color Gamut & EOTF Viewing

1 input source copied to 4 windows and display different HDR/SDR and color gamut simultaneously.



HDR/SDR simultaneously view

■ 18-bit Processing / Zero Latency

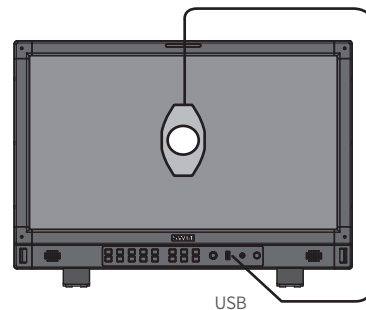
Internal 18-bit signal processing, and less than 1/100 frames audio/video latency for lip-sync monitoring.

■ Delog 3DLUTs & User 3DLUTs Upload

With built-in De-log LUTs including Log-C, S-log2, S-log3, C-log, V-log and RedLogFilm LUTs, to convert Log video to 709 SDR or HLG/PQ HDR. Support User 3DLUTs upload by USB.

■ 3DLUT Auto Self-Calibration

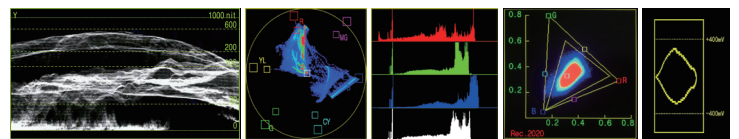
Built-in calibration software, supports X-rite i1 and JETI Specbos 1211 probes directly plug into monitor USB port to auto calibrate. Calibration time: X-rite i1: 15min; Specbos1211: 45min
Calibration result: $\Delta E < 1.0$



Built-in 3DLUT calibration software, Directly connect color sensor probe to monitor USB port, and the monitor will calibrate itself automatically.

■ Video Assist Patterns

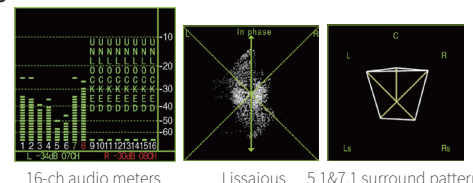
Waveform and single line selection, Vector scope, Histogram and unique Color Gamut pattern and Eye pattern for 12GSDI, supports multiple display position, size and color selection for the patterns.



Y/Cb/Cr/R/G/B Waveform with nits Support single line waveform Vector Scope R/G/B/Y Histogram Rec. 709/2020 Color Gamut Pattern Eye Pattern

■ Audio Assist Patterns

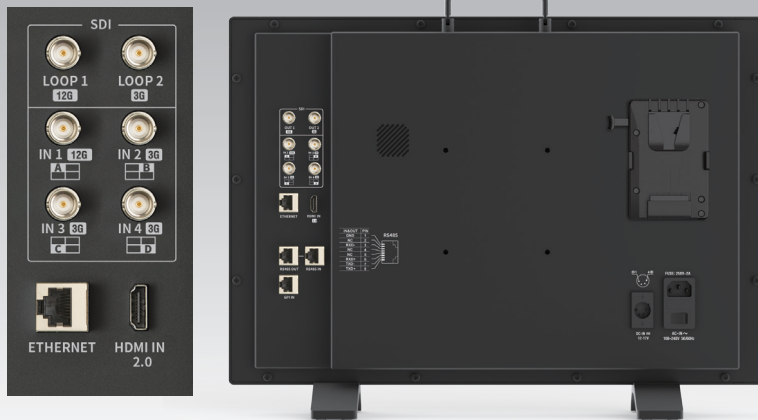
16-ch audio meters, and select any 2-ch to output via 3.5mm or speakers; Support Lissajous and 5.1/7.1 surround patterns.



16-ch audio meters Lissajous 5.1&7.1 surround pattern

■ Others

Focus assist, R/G/B/mono, False color, Zebra, H/V delay, Freeze; 15:9, 14:9, 13:9, 4:3, 2.35:1, 2:1, 1.85:1 and User defined markers; Support TSL 3.1/4.0 UMD and text TALLY display; GPI control and webserver IP control, USB firmware updates.



- ◆ 4K Inputs: 12GSDI / 4x3G / HDMI 2.0
- ◆ Multi CG/EOTF Simultaneous View
- ◆ Eye Pattern, Surround Sound pattern
- ◆ 3DLUT Self-calibration, $\Delta E < 1.0$

Video Formats

SDI IN1 & LOOP1 (12G)

4096×2160p (60 / 59.94 / 50 / 30 / 29.97 / 25 / 24 / 23.98)
 3840×2160p (60 / 59.94 / 50 / 30 / 29.97 / 25 / 24 / 23.98)
 2048×1080p (60 / 59.94 / 50 / 30 / 29.97 / 25 / 24 / 23.98)
 2048×1080i (50 / 59.94 / 60)
 1080p (60 / 59.94 / 50 / 30 / 29.97 / 25 / 24 / 23.98)
 1080i (60 / 59.94 / 50)
 1080psf (30 / 29.97 / 25 / 24 / 23.98)
 720p (60 / 59.94 / 50)
 480i (59.94) 576i (50)

SDI IN2/3/4 & LOOP2 (3G)

2048×1080p (60 / 59.94 / 50 / 30 / 29.97 / 25 / 24 / 23.98)
 2048×1080i (50 / 59.94 / 60)
 1080p (60 / 59.94 / 50 / 30 / 29.97 / 25 / 24 / 23.98)
 1080i (60 / 59.94 / 50)
 1080psf (30 / 29.97 / 25 / 24 / 23.98)
 720p (60 / 59.94 / 50)
 480i (59.94) 576i (50)

4K Quad-link SDI IN (each channel)

2048×1080p (60 / 59.94 / 50 / 30 / 29.97 / 25 / 24 / 23.98)
 1080p (60 / 59.94 / 50 / 30 / 29.97 / 25 / 24 / 23.98)

HDMI IN (2.0)

4096×2160p (60 / 59.94 / 50 / 30 / 29.97 / 25 / 24 / 23.98)
 3840×2160p (60 / 59.94 / 50 / 30 / 29.97 / 25 / 24 / 23.98)
 1080p (60 / 59.94 / 50 / 30 / 29.97 / 25 / 24 / 23.98)
 1080i (60 / 59.94 / 50)
 720p (60 / 59.94 / 50)

Specifications

Model		BM-H215
Display	LCD size	21.5 inches
	Resolution	1920×1080
	Aspect Ratio	16:9
	Color Depth	8bit 16.77M colors
	Internal Processing	18bit
	Viewing angle	H/V 178/178
	Brightness	250nits
	Contrast	1000:1
Input	SDI 1	12G/6G/3G/HD-SDI ×1
	SDI 2/3/4	3G/HD-SDI ×3
	HDMI	HDMI 2.0 ×1
	UMD	RS485×1
	GPI (Tally)	RS485×1
	Ethernet	RJ45×1, 1000M
Output	USB	USB-A×1 – 3DLUT & Firmware
	SDI 1	12G/6G/3G/HD-SDI Loop ×1
	SDI 2	3G/HD-SDI loop ×1
	Analog audio	3.5mm headphone + Speaker
General	UMD	RS485×1
	AC Input	AC 100-240V 50/60Hz
	DC Input	DC 12-17V, V-mount plate
	Power	≤60W
	Working environment	0°C - +40°C; 10% - 90%
	Storage environment	- 15°C - + 60°C; 10% - 90%
	Dimensions	530.6×364.3×74.2mm
Weight	6.05kg	

